



OFFICE/WAREHOUSE FOR LEASE

1646 S Research Loop #160 , Tucson, AZ

PROPERTY DETAILS

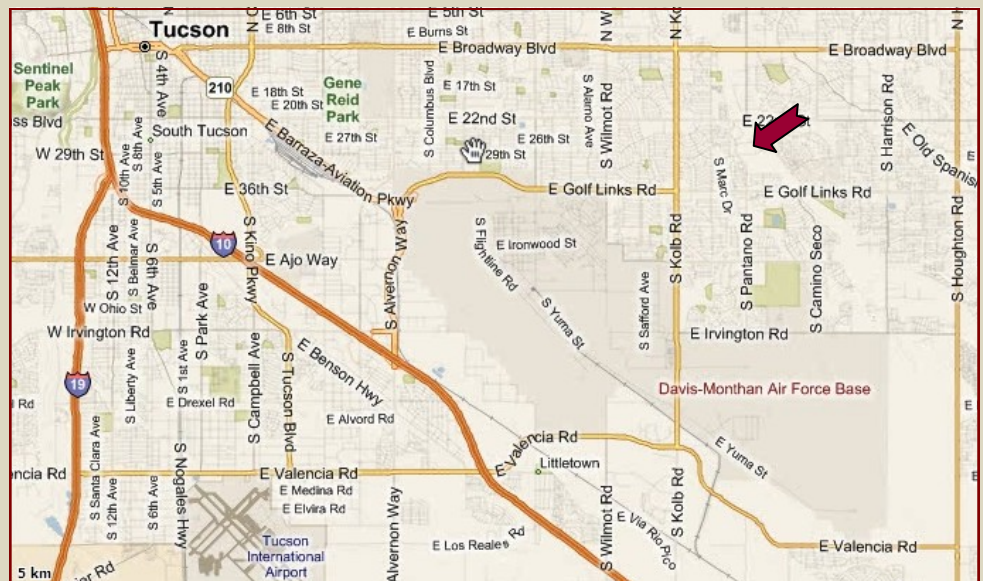
PRICE: N/A
LEASE RATE: \$0.50/SF NNN
TAXES (2010) N/A
SIZE: 2,590 SF
YOC: 1987
OFFICE SPACE: +/- 500 SF
WAREHOUSE: 2,090 SF
LAND: N/A
OTHER BUILDING: N/A
CEILING HT: 16'
DOORS: (2) 10'x10'
ZONING: I-1 City of Tucson Light Industrial
UTILITIES: Three phase
COOLING: HVAC in office
Evap in warehouse
CONSTRUCTION: Concrete
YARD: N/A
ASSESSOR CODE: N/A
CAM: Yes



COMMENTS

This space was previously occupied by a machine shop and could be reused for that purpose. The space is good shop space that can fit any number of uses. One of the best premium high image business parks on Tucson's east side. Owners motivated for long term lease.

DAVID A. GALLAHER, CCIM
 6061 E Grant Rd.
 Suite# 119
 Tucson, AZ 85712
Phone: 520.294.1610
Fax: 520.290.5293
www.tucsonindustrialrealty.com
dave@tucsonindustrialrealty.com

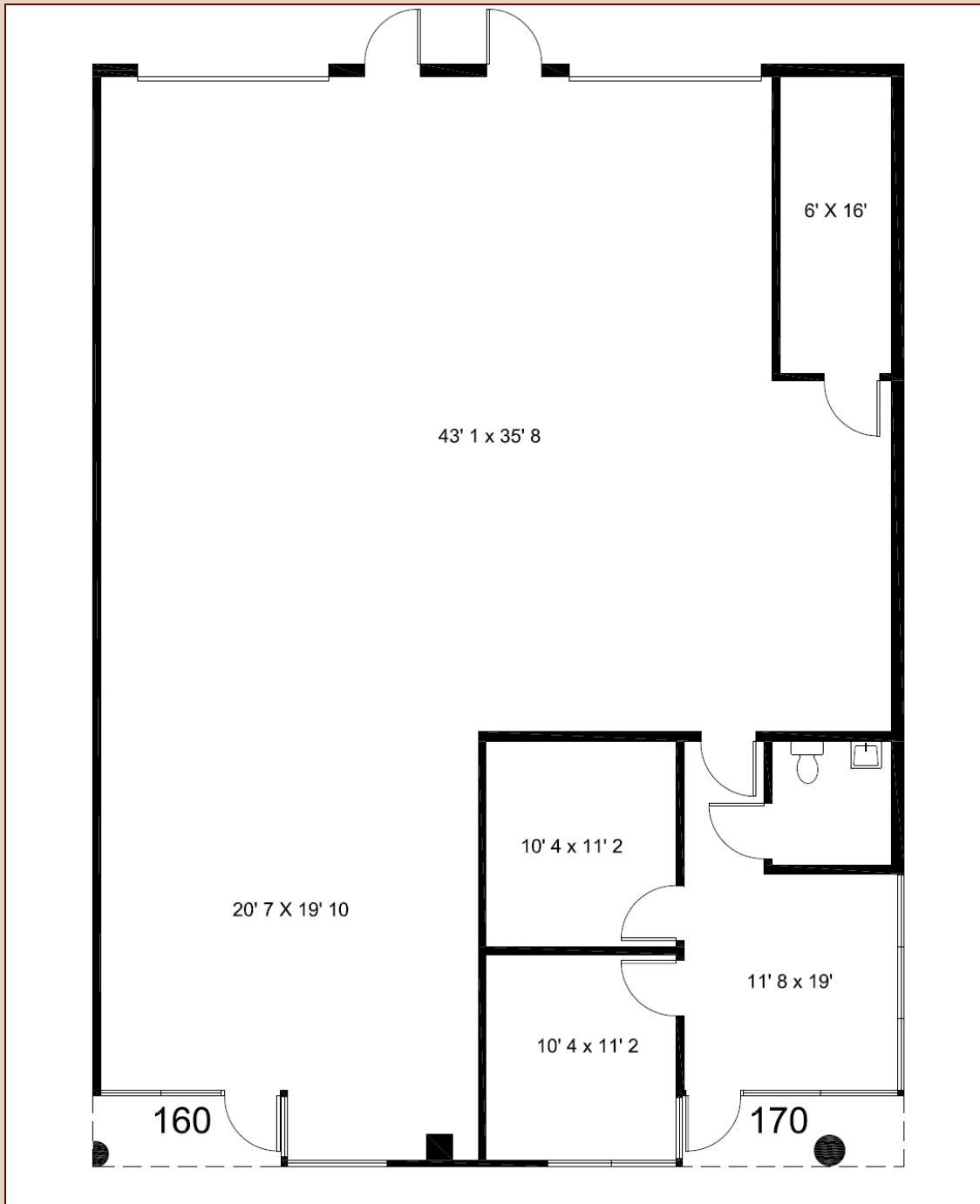


The information herein was obtained from third parties, and it has not been independently verified by the Real Estate Brokers. Buyer/Tenants should have the experts of their choice inspect the property and verify all information including the availability. Linear and area measurements are approximate, often are inaccurate and should be confirmed by the licensed surveyor of the buyers tenants choice. Real Estate Brokers are not qualified to act as or select experts to legal, tax, environmental, building construction, soils drainage or other such matters.



OFFICE/WAREHOUSE FOR LEASE

1646 S Research Loop #160 , Tucson, AZ



DAVID A. GALLAHER, CCIM

6061 E Grant Rd.

Suite# 119

Tucson, AZ 85712

Phone: 520.294.1610

Fax: 520.290.5293

www.tucsonindustrialrealty.com
dave@tucsonindustrialrealty.com