

BUILDING FOR LEASE

2301 N. FORBES Ste 111

Tucson, AZ

PRICE \$ NA

LEASE RATE: \$.50/SF NNN

ZONING: I-1 City of Tucson
Light Industrial

SIZE: 7,875 SF

LAND: Small yard

OFFICE: 100%

YARD: YES

DOORS: 2 10'x10'

CEILING HT: 15'

UTILITIES: single phase

CONSTRUCTION: Tilt concrete

COOLING: 100% AC

PARCEL ID: 115-16-023B

COMMENTS: This property is part of a larger building in Tucson's premier Broadbent Business Park near Grant & I-10. This space is perfect flex space with all air conditioning and very large open room spaces. Ceiling height varies and much of it is dropped ceiling. There is a small fenced yard and plenty of parking.



DAVID A. GALLAHER, CCIM

6061 E Grant Rd.

Suite# 119

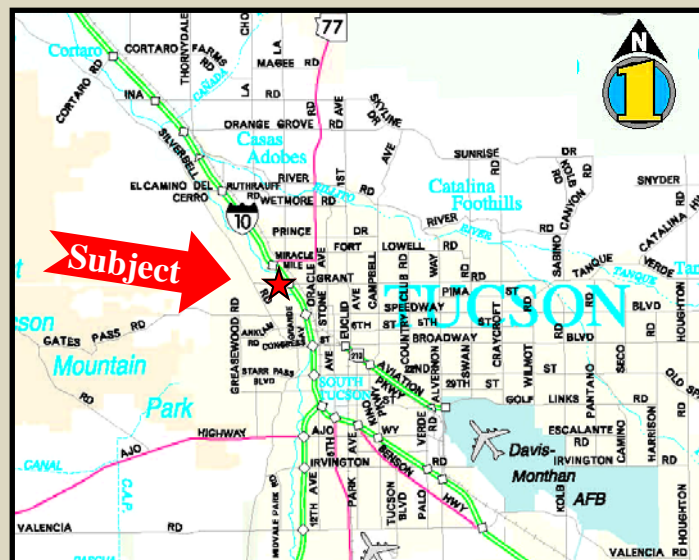
Tucson, AZ 85712

Phone: 520.294.1610

Fax: 520.290.5293

www.tucsonindustrialrealty.com

dave@tucsonindustrialrealty.com



The information herein was obtained from third parties, and it has not been independently verified by the Real Estate Brokers. Buyer/Tenants should have the experts of their choice inspect the property and verify all information including the availability. Linear and area measurements are approximate, often are inaccurate and should be confirmed by the licensed surveyor of the buyers tenants choice. Real Estate Brokers are not qualified to act as or select experts to legal, tax, environmental, building construction, soils drainage or other such matters.

